

MindManager® information maps provide an intuitive visual framework that fosters clarity, innovative thinking & communication to improve business results.

#### How it works:

You create maps in MindManager by starting with a central theme or goal. Then provide more detail by adding subtopics with notes, images, tasks, hyperlinks & attachments containing related ideas & information.

Mindjet

# MindManager®

Version 9 for Windows®

### Accomplish More, Faster

- Clearly align & organize your ideas, information & strategies in ways that increase your productivity.
- See the big picture & all the relevant details, uncover hidden connections & reveal new opportunities.

### Ensure Project Success

- Achieve active participation in project planning & goal setting to fully engage the project team.
- Create more realistic plans & schedules by mapping out your tasks, optimizing resource assignments & defining dependencies and timelines.

### Communicate More Effectively

- Organize & present everything in a visual context to ensure clear understanding & dramatically improve retention.
- Share your ideas, plans, vision & research by publishing maps in the most widely used formats.

## TOP FEATURES

### Industry-Leading Information Visualizations

Easily lay out, organize & work with ideas & information in a wide variety of interactive visual formats, including information maps, outlines, Gantt charts, organization charts, tree diagrams & a special brainstorming mode.

### Project & Task Management

Quickly brainstorm tasks, automatically calculate summary tasks & optimize resource utilization. View MindManager, Outlook & SharePoint\* tasks in the synchronized Gantt view or export tasks to Microsoft Project.

\*Mindjet MindManager Explorer for SharePoint sold separately.



THINK IT. SEE IT. SHARE IT.

## TOP FEATURES (CONTINUED)

### Information Map Presentations

Showcase your ideas & increase engagement using MindManager's automated presentation view or customizable slide shows. With MindManager's dynamic presentations, you'll easily tailor the level of details presented for each audience & capture critical feedback right in the presentation.

### Integration & Sharing

Save time with powerful integrations. Import from Microsoft Word & Project. Export to Word, Project, or PowerPoint. Display dynamic Outlook or Excel content. Export web pages, images, PDF files & more. Or, share hosted interactive map files with anyone on the web even if they do not have MindManager.

### Capture Content & Add Context

Easily add hyperlinks, attachments, notes, images & spreadsheets to provide additional levels of details. Quickly drag & drop content to reorganize it & provide structure. Use icons, tags, topic shapes, callouts, boundaries, colors, topic sorting & numbering to provide additional context.

## SYSTEM REQUIREMENTS

### Supported Operating Systems:

- Microsoft® Windows® 7 32-bit & 64-bit\*
- Microsoft® Windows Vista® 32-bit
- Microsoft® Windows XP® SP3 32-bit
- Microsoft® Windows Server® 2003 32-bit
- Microsoft® Systems Management Server Using Windows Server® 2003 32-bit
- Citrix® MetaFrame Presentation Server 4.5

### System Requirements:

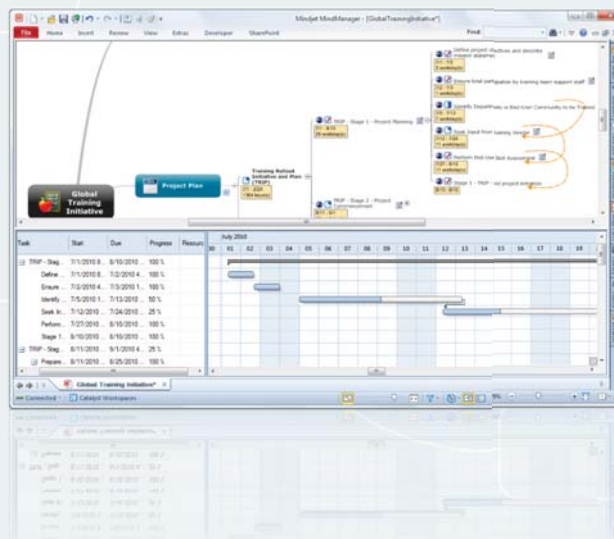
- IBM® or compatible Pentium® Processor (1 GHz or greater)
- 1 GB RAM or greater
- 200 MB disk space & 100 MB more during installation
- SVGA (1024 x 768/16-bit color or greater)
- Microsoft .NET 3.5 or higher

### Dynamic Content

See everything in context with dynamic Microsoft Outlook dashboards to display & update relevant emails, tasks, contacts, notes & appointments. Populate branches with desktop or network folders & files for easy access. Or, perform Google or Bing web searches with results appearing directly in your map.

### Navigation & Viewing Controls

Easily navigate & control the levels of details displayed with powerful features like topic focus, show or hide branch, collapse map, quick & power filters & more... Automatically fit or balance your map within the screen or use the mini-map view to navigate large maps.



### Additional Requirements for Certain Features:

- Microsoft Office® Professional 2003, 2007, or 2010
- Microsoft Project® 2003, 2007, or 2010
- Microsoft® Internet Explorer® 7.0 or greater
- Mozilla® Firefox® 3.0 or greater
- Google Chrome™ 4.0 or greater
- Adobe® Acrobat® 9.0 or greater
- Adobe Flash® Player 9 or greater
- Internet Connection

\*32-bit Microsoft Office recommended for 'Send to MindManager' functionality.